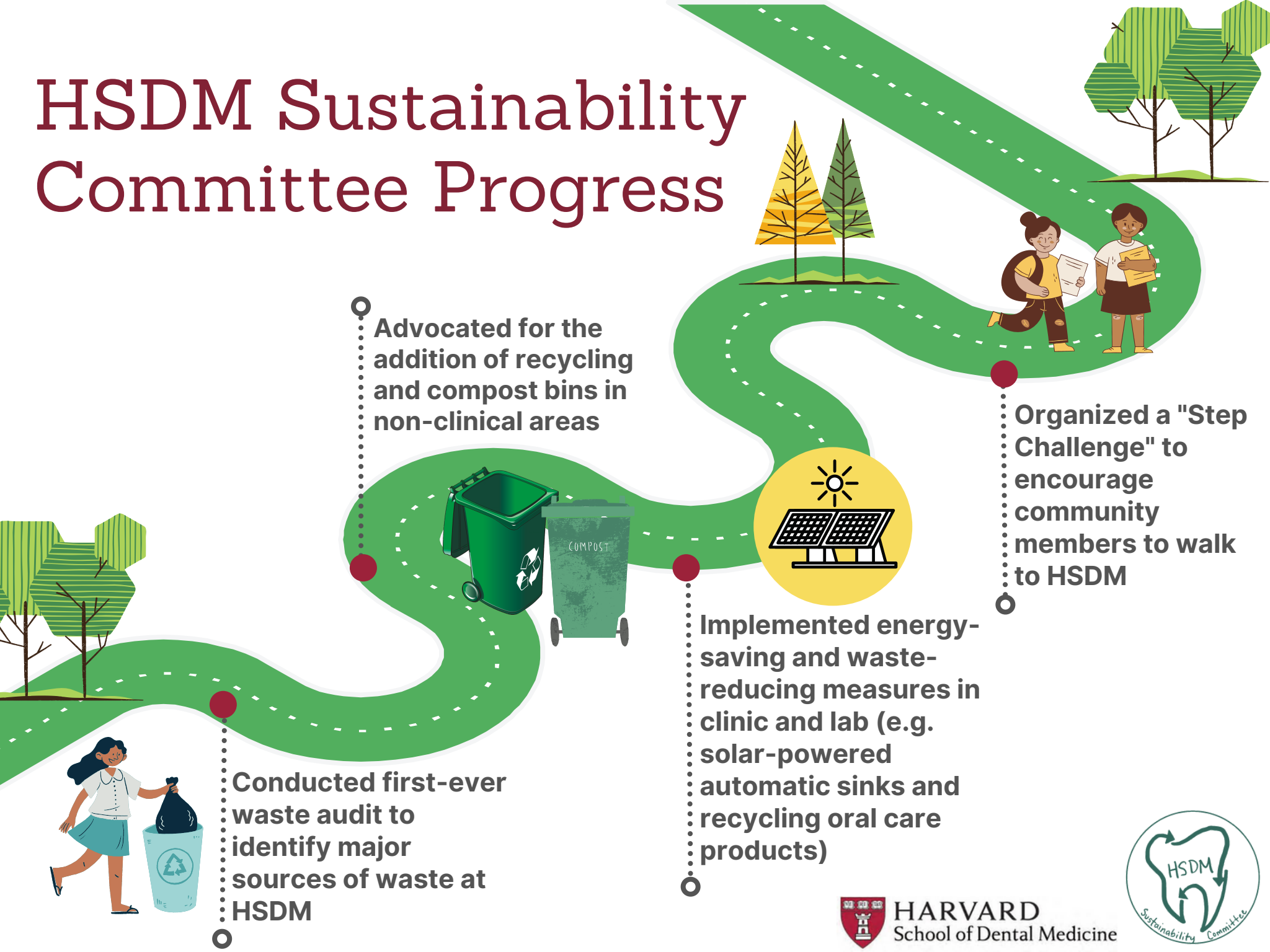


# HSDM Sustainability Committee Progress

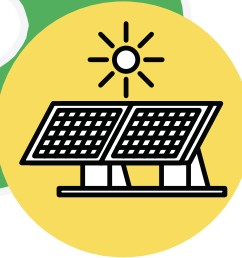


Advocated for the addition of recycling and compost bins in non-clinical areas



Organized a "Step Challenge" to encourage community members to walk to HSDM

Implemented energy-saving and waste-reducing measures in clinic and lab (e.g. solar-powered automatic sinks and recycling oral care products)



Conducted first-ever waste audit to identify major sources of waste at HSDM



HARVARD  
School of Dental Medicine

